

ZKU 150-350 SLEW CRANES

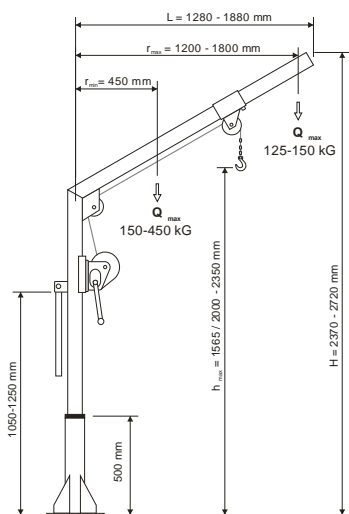
Cranes intended for handling of equipment in drainage basins, intermediate pumping stations and wastewater treatment plants. They eliminate the need for manual moving of heavy elements during installation and maintenance works. The design of cranes enables their easy disassembly and relocation, particularly in the standard version, with very low weight and overall dimensions.

Functions:

- vertical lifting and lowering as well as horizontal movement (rotation of crane pillar around vertical axis) of loads, whose weight does not exceed 150-350 kg,
- can be used as portable cranes.

| Crane symbol | ZKU 150 | ZKU 250 | ZKU 350 | Unit |
|---------------------------|---|------------|---------|------|
| Type of winch | WLS 250 | WLS 250 | WLS 500 | - |
| Maximum lifting capacity | 125-150 | 125-250 | 125-350 | kg |
| Maximum reach | | 1.2 - 1.8 | | m |
| Maximum lifting height | | 2.0 - 2.35 | | m |
| Angle of rotation | | 360° | | deg. |
| Total height | | 2.4 - 2.7 | | m |
| Lift angle of rotation | | 215° | | deg. |
| Line diameter | 4 | 5 | 5 | mm |
| Line length | | 10 | | m |
| Maximum line length | 67 | 18 | 48 | m |
| Lowering depth | 5 m below foundation level for 10 m line | | | m |
| Line termination | hook or shackle | | | - |
| Crane weight without base | 40 - 48 | 41- 49 | 45 - 53 | kg |
| Weight of H-type base | | 13 | | kg |
| Weight of V-type base | | 10 | | kg |
| Overall dimensions | 2.4 - 2.7 x 1.4 - 2.0 x 0.2 | | | m |
| Base fixing screws | 4 M16 screws with minimum strength class 5.6 | | | - |
| Material | hot-galvanized steel (OC) or stainless steel (SS) | | | - |

The data above should only be used in conjunction with up to date and detailed information on www.biox.pl



H-type base

V-type base

