

ZKM 500-800 PILLAR CRANES

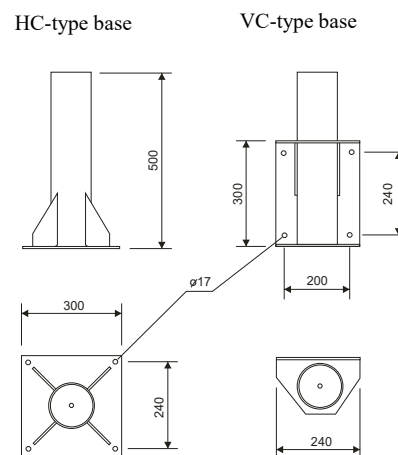
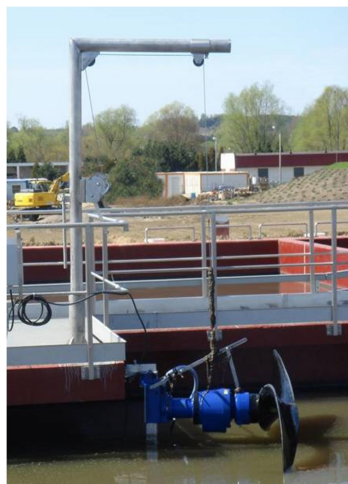
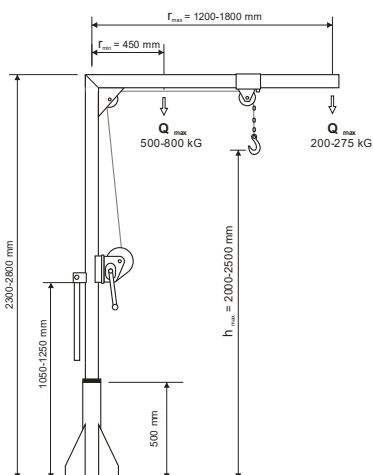
Cranes intended for handling of equipment in drainage basins, intermediate pumping stations and wastewater treatment plants. They eliminate the need for manual moving of heavy elements during installation and maintenance works. The design of cranes enables their easy disassembly and relocation, particularly in the standard version, with very low weight and overall dimensions.

Functions:

- vertical lifting and lowering as well as horizontal movement (rotation of crane pillar around vertical axis) of loads, whose weight does not exceed 200-800 kg,
- can be used as portable cranes.

Crane symbol	ZKM 500	ZKM 600	ZKM 700	ZKM 800	Unit
Type of winch	WLS 500	WLS 800	WLS 800	WLS 800	-
Maximum lifting capacity	200 - 500	200 - 600	225 - 700	275 - 800	kg
Maximum reach	1.3 - 1.8				m
Max lifting height	2.0 - 2.5				m
Angle of rotation	360°				degrees
Total height	2.5				m
Line diameter	6	6	6	7	mm
Line length	10				m
Maximum line length	29	29	29	20	m
Lowering depth	5 m below foundation level for 10 m line				m
Line termination	shackle				-
Crane weight without base	52 - 61	55 - 64	58 - 69	64 - 77	kg
Weight of HC-type base	16				kg
Weight of VC-type base	12				kg
Overall dimensions	2.3 - 2.8 x 1.3 - 1.8 x 0.2				m
Base fixing screws	4 M16 screws with minimum strength class 5.6				-
Material	hot-galvanized steel (OC) or stainless steel (SS)				-

The data above should only be used in conjunction with up to date and detailed information on www.biox.pl



od 1989

mieszadła



natleniacze



dekantery



zbieracze



żurawiki



przewodnice



wciągarki