

## DW 50-200 MULTI-FLOAT DECANTERS

Two (2P) or four-float (4P) decanters with drain trough immersed at a preset depth and connector pipe for drain hose. The output of drainage mainly depends on the decanter's size and settings, the length of the drain pipe, and the extent to which the sluice valve on the outlet of the drain hose is opened.

The decanter's position on the surface of the tank is established by means of an articulated or roll stabilization system. The four-float decanter can also float freely on the surface of wastewater within the reach of the drain pipe or retaining lines.

Functions:

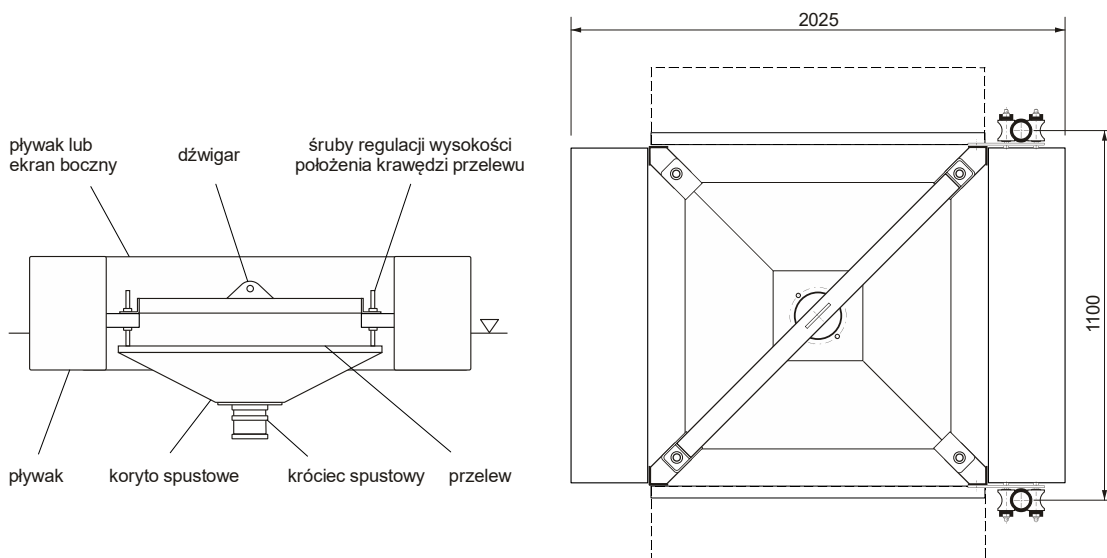
- for drainage of the clarified surface layer of wastewater,
- can replace secondary settling tanks, particularly at wastewater treatment plants operating in a sequential system.

| Parameter                                      | Decanter size  |              |              |                 |     |             |     |          |      | Units             |    |
|--|----------------|--------------|--------------|-----------------|-----|-------------|-----|----------|------|-------------------|----|
|  | 50             | 65           | 80           | 90              | 100 | 110         | 125 | 150*     | 200* |                   |    |
| Interior diameter of rigid drain channel       | 50             | 65           | 80           | 90              | 100 | 110         | 125 | 150      | 200  | mm                |    |
| Interior diameter of flexible drain hose (PVC) | 60             | 75           | 90           | 100             | 110 | 125         | 135 | 160      | 203  | mm                |    |
|  | 2.5'<br>(63.5) | 3'<br>(76.2) | 3.5'<br>(89) | 4'<br>(102)     | -   | 5'<br>(127) | -   | -        | -    | inches<br>(mm)    |    |
| Comparative output**                           | 35             | 60           | 90           | 115             | 145 | 175         | 225 | 325      | 575  | m <sup>3</sup> /h |    |
| Exterior dimensions of decanter                | 1050x2025 (2P) |              |              | 2025x2025 (4P)  |     |             |     |          |      |                   | mm |
| Float immersion                                |                |              |              | 145 (2P)        |     | 100 (4P)    |     |          |      |                   | kg |
| Total decanter weight                          |                |              |              | 145 (2P)        |     | 205 (4P)    |     |          |      |                   | mm |
| Stabilization system                           |                |              |              | P - articulated |     | or          |     | R - roll |      |                   | -  |
| Spacing of roll guide pipes                    |                |              |              | 1100            |     |             |     |          |      | mm                |    |

\* Decanters made only on special order.

\*\* Comparative output for PVC hose, length 3 m, for constant level difference 2 m and free outflow.

For safety of the treatment plant's operation and problem-free decanter operation, a valve should be mounted on the hose's outlet. The data should be given in greater detail and updated based on information on [www.biox.pl](http://www.biox.pl)



od 1989

mieszadła



natleniacze



dekantery



zbieracze



żurawiki



przewodnice



wciągarki